



# York Road

Venue  
Brochure

# Introduction

York Road is conveniently located just minutes from London Waterloo Station in one of the city's most desirable buildings. WeWork's high-tech and versatile building is home to four sleek and unique event spaces, with a range of capacities up to 150. All spaces can be hired in combination or individually giving you exclusive access to host your event high above the city.



# Dimensions and capacities

## 16th Floor

Sq.m	Reception	Conference	Cabaret	Dinner
250 sq.m	150	100	48	64

## Terrace

Sq.m	Reception
252 sq.m	150

\* Total capacity for 16th Floor and The Terrace

## The Auditorium

Sq.m	Conference
206 sq.m	100

## The Speakeasy

Sq.m	Reception	Boardroom
55 sq.m	20	8





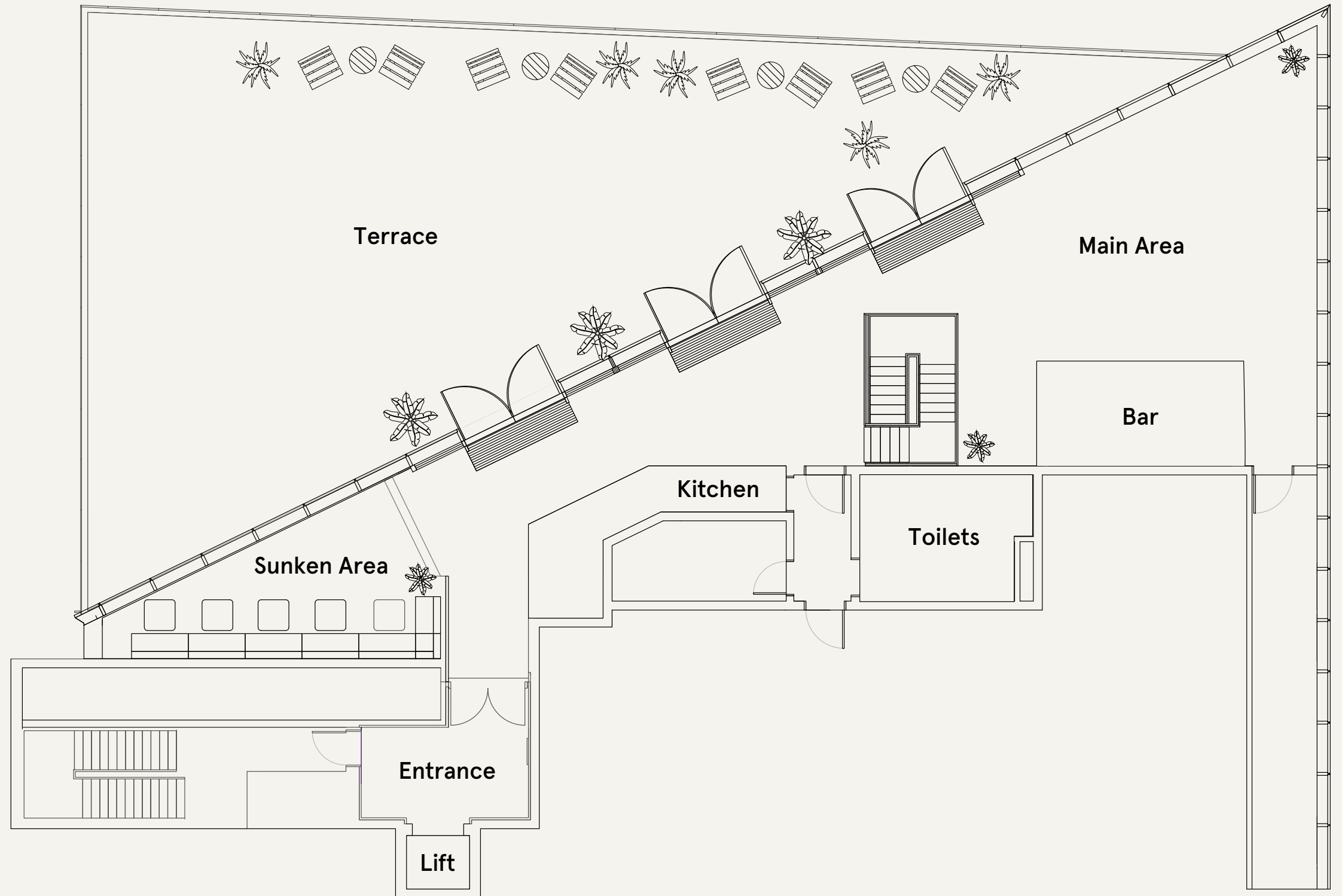
# Event Spaces

## 16th Floor

The 16th Floor is an impressive light-filled and diverse space with exceptional views across London. The double-height open space enables attendees to move freely through the venue while also designed with flexibility for quieter event breakout needs. The space is made to be flexible and can easily be transformed for conferences, receptions or dinners allowing full use of the exclusive bar and open kitchen. The additional sunken area offers a quieter space to network.

## Terrace

The huge connected Terrace with 180-degree river views frame landmarks such as the Houses of Parliament, Battersea Power Station and the London Eye. The terrace comes with a range of furniture and is the perfect environment for summer parties, celebrations and away days. The 16th Floor and Terrace must be booked together but allow full exclusivity for your event.



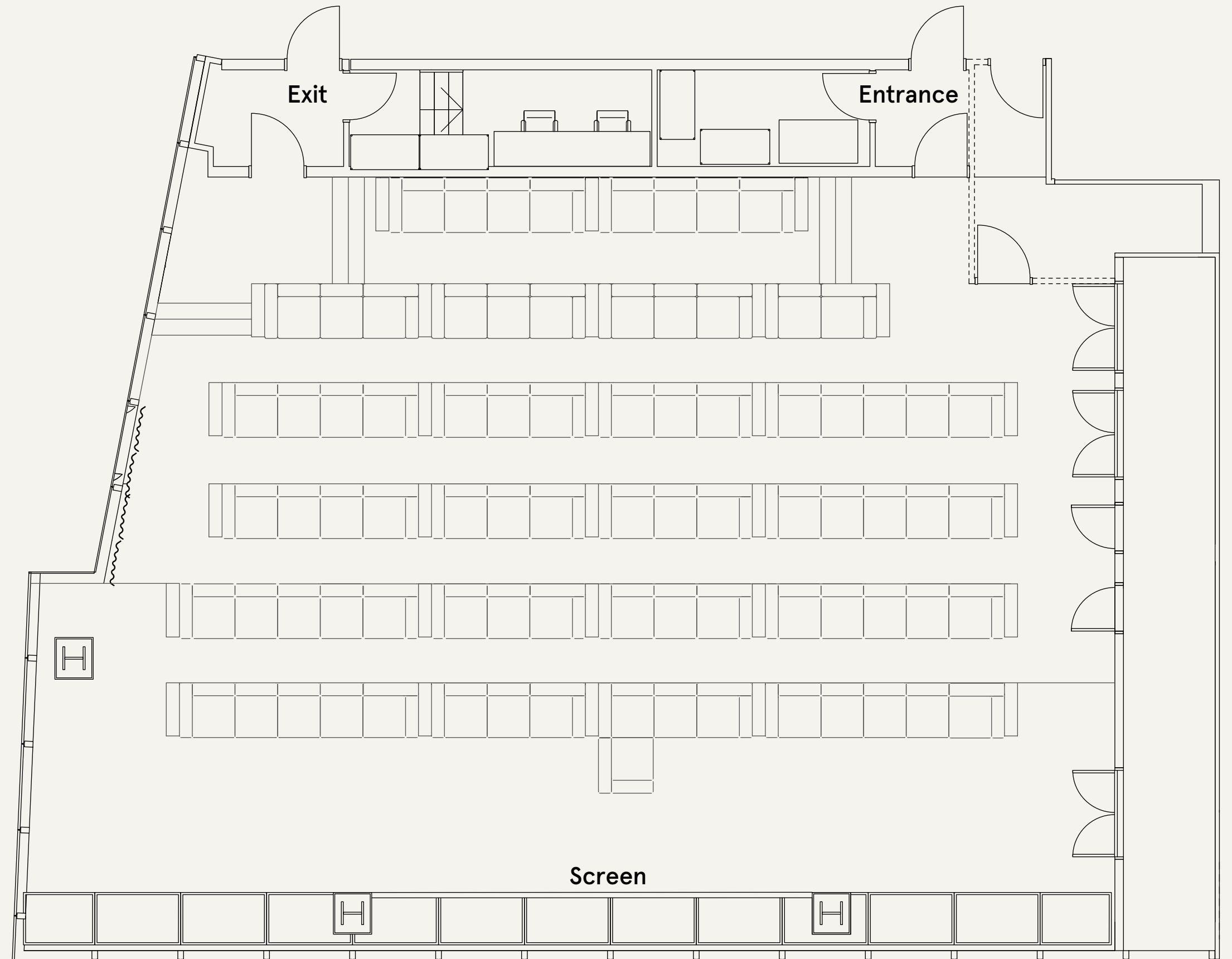




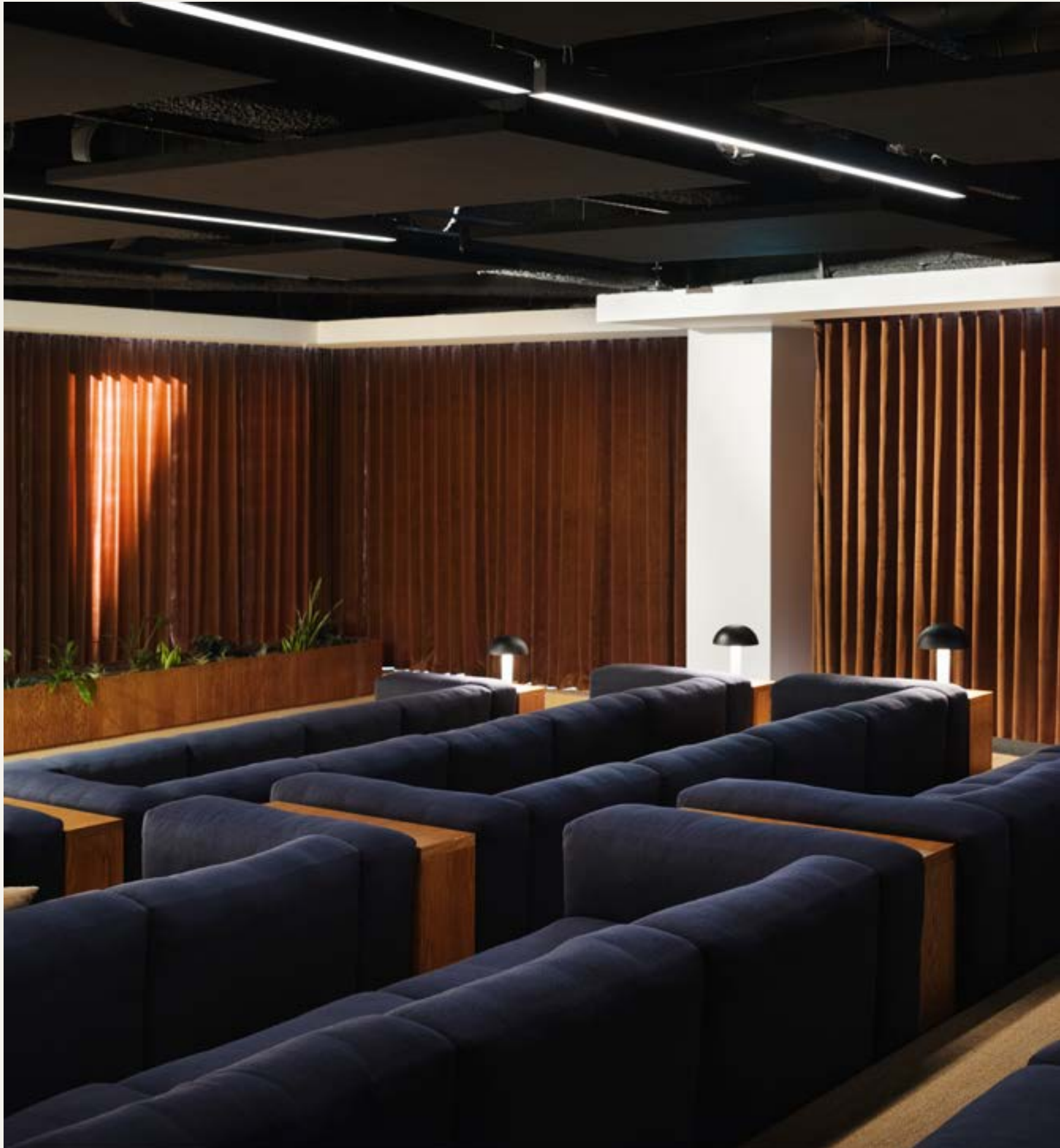
# Event Spaces

## The Auditorium

The Auditorium on the 8th floor of the flagship building is a custom built luxury presentation space. Unlike some theatre style setups, this space is filled with large comfortable sofas and stylish furnishings, providing a premium cinema experience. The venue is equipped with full audio visual facilities and also has hybrid and virtual event capabilities.



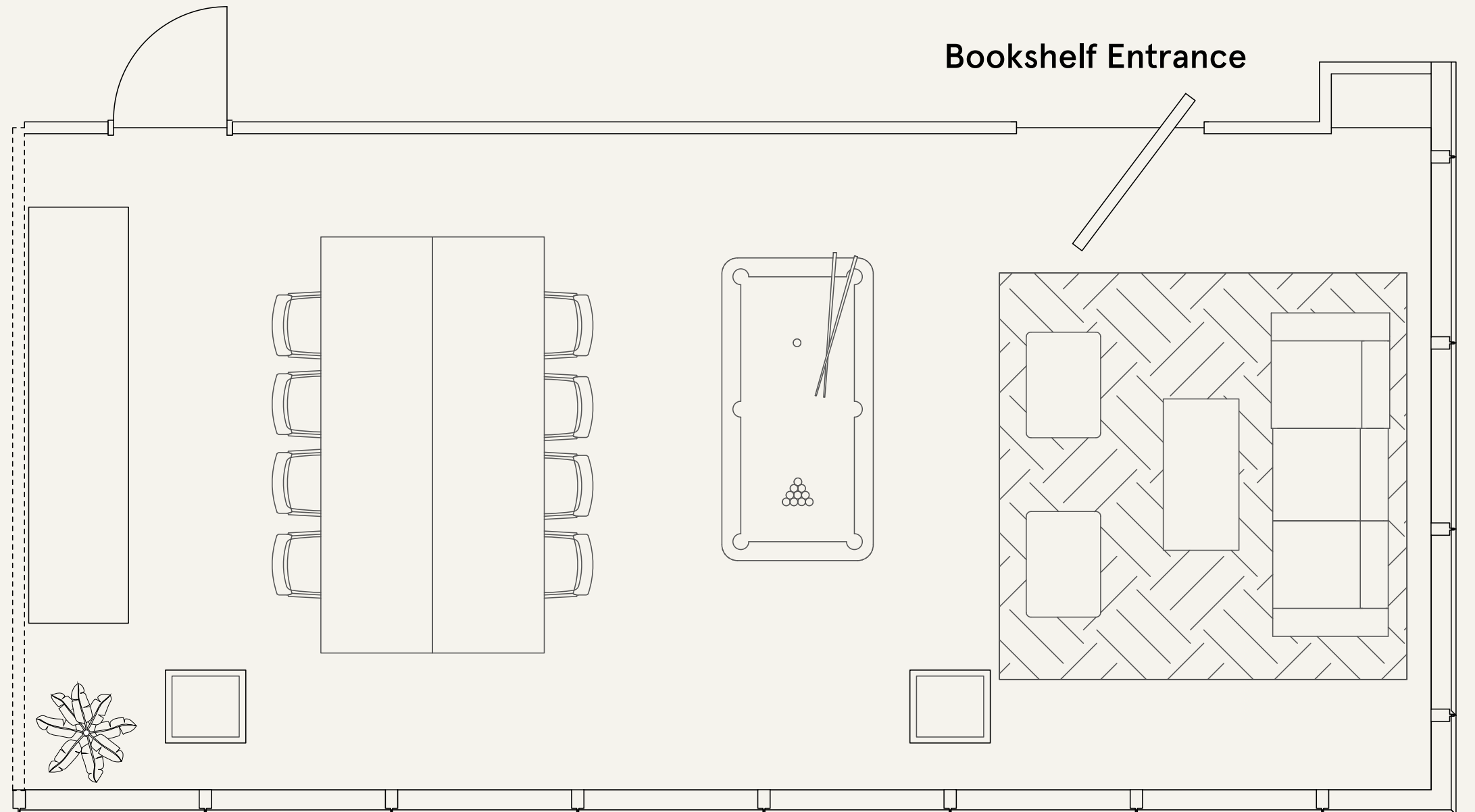




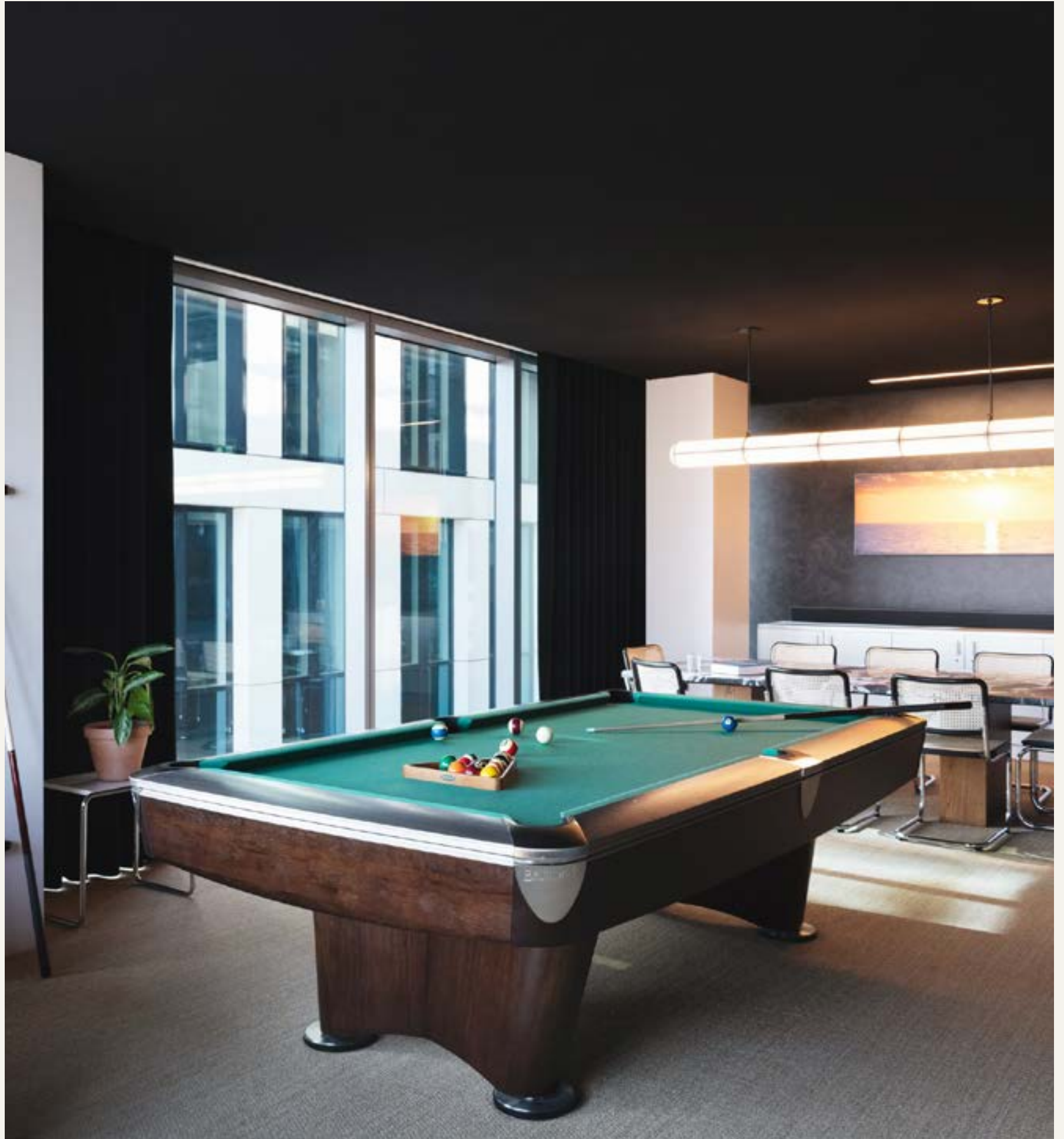
# Event Spaces

## The Speakeasy

Hidden behind a bookcase in the building's impressive library, The Speakeasy provides an exclusive and luxurious space for up to 20 people. With stunning views from a panoramic corner window, the space includes comfortable sofas, a pool table and a terrazzo marble meeting table. It would serve as the perfect breakaway or VIP space when hiring the 16th Floor, or for high-profile private events such as board meetings and fundraising presentations.









# Our Preferred Suppliers

## Technical Requirements / AV

Vibration Design and Production  
[max.elliott@vibration-group.com](mailto:max.elliott@vibration-group.com)

## Branding

N2 Display  
[mick.woodward@n2display.com](mailto:mick.woodward@n2display.com)

## Catering

BaxterStorey  
[weworkyorkroad@baxterstorey.com](mailto:weworkyorkroad@baxterstorey.com)

\*Please share your requirements and we'll be happy to make introductions.







# Contact Us

10 York Rd, London SE1 7ND  
+44 (0) 20 3319 9332  
wework@spacesstories.com  
spacesstories.com

